



DRIVERS' BRIEFING

A WORLD IN MOTION

FEDERATION
INTERNATIONALE
DE L'AUTOMOBILE

FIA.COM



Welcome!

*GHD LUČINE 2022
(SLOVENIA)*

05-07 / 08 2022

Lucine
INTERNATIONAL HILL CLIMB RACE **20**
Anniversary

CONTENT

OFFICIALS - CONTACT

I. BEFORE THE RACE

- ➔ COURSE FAMILIARISATION
- ➔ SERVICE PARK & PRE-START AREA
- ➔ INFORMATION BOARD & START

II. FLAGS

III. AFTER THE RACE

- ➔ CONVOY

-
- *Additional information from Clerk of the Course - COMMUNICATION No.1 (received by the Competitors and posted on the event's website)*

OFFICIALS

Clerk of the Course (CoC)



***Daniel
Trček***

Mobile: + 38651641689

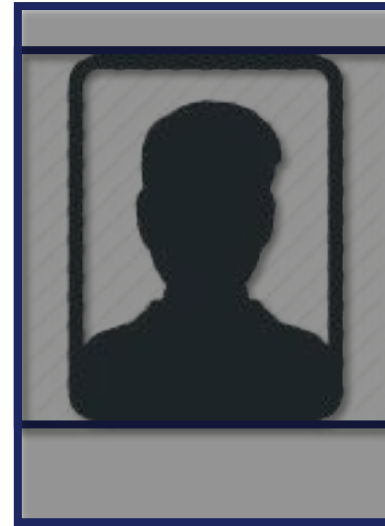
Email: dane.trcek@gmail.com

Day / Time: Friday / 07h00 - 20h30

Day / Time: Saturday / 07h00 - 20h00

Day / Time: Sunday / 07h00 - 20h00

Competitor Relations Officer (CRO)



***TBA
TBA***

Mobile: + TBA

Email: TBA

Day / Time: Friday / 07h00 - 20h30

Day / Time: Saturday / 07h00 - 20h00

Day / Time: Sunday / 07h00 - 20h00

OFFICIALS

Chairman of the Stewards	G. Peter Marc
Steward	G. Arsen Ulčar (HRV)
Steward	Xxx XXX
Steward	Xxx XXX
Steward	Xxx XXX

FIA Observer

ASN Observer

Dagmar ŠUSTER

OFFICIALS

Service park supervisor



*Nejc
Šubic*

Mobile: + XXXXXXXXXXXXX

Email: XXXXXXXXXXXXX

Day / Time: Thursday / 18h00 - 21h00

Day / Time: Friday / 06h00 - 20h30

Day / Time: Saturday / 07h00 - 20h00

Day / Time: Sunday / 07h00 - 20h00

Service park supervisor



*Xxx
XXXXXX*

Mobile: + XXXXXXXXXXXXX

Email: XXXXXXXXXXXXX

Day / Time: XXX / XXhXX - XXhXX






Day / Time: XXX / XXhXX - XXhXX

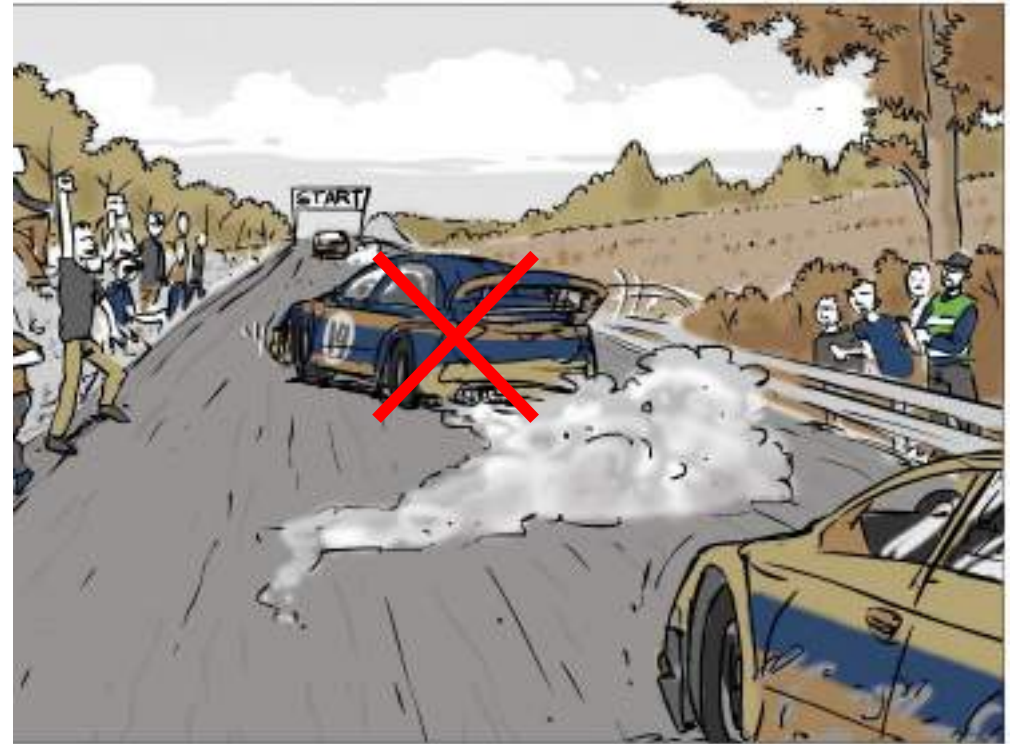
Day / Time: XXX / XXhXX - XXhXX



BEFORE THE RACE

- ➔ **Familiarise yourself with the layout of the course** (*road surface, modifications, info provided at the briefing, etc.*).
- ➔
 - **Identify any potential dangers before practice**
- ➔
 - **Consider the practice heats as reconnaissance heats** (*adapt your speed and performance accordingly*).

-  *DO NOT PREHEAT YOUR TYRES*
-  *NO WHEEL SPINNING*
-  *NO ZIGZAGGING*
-  *NO ACCELERATION*
-  *NO HEAVY BREAKING*



DRIVE AT A MODERATE SPEED (10 kph)

INFO BOARD IN THE STARTING FILE

- *Real-time indications;*
- *Modifications;*
- *Special precautions etc.*



*BEFORE THE START,
STAY INFORMED.*



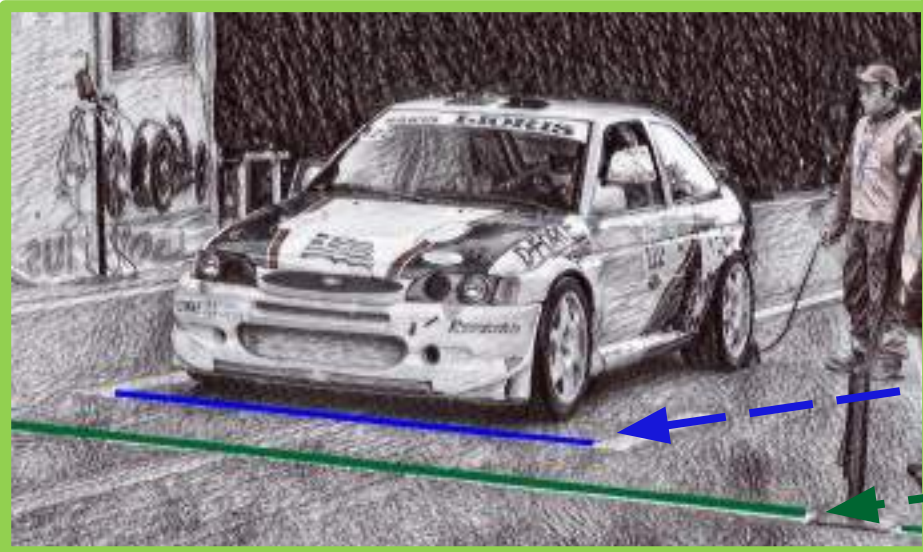


X



RESPECT THE POSITION LINE AT THE START

The forward most part of your car is as close as possible to the position line.



✓

Position line

Start line



FLAGS

RED FLAG

➔ **STOP!**
immediately and
definitively.

➔ Follow the instructions indicated by the track marshals.



*Practice or race is
stopped.*



1 YELLOW FLAG *waved*

 **Reduce your speed and be prepared to stop.**



*Serious danger.
There is a hazard partly or completely blocking
the track.*

Yellow flag with red stripes

 **CAUTION!**



Slippery surface, change in grip.

Blue flag



 **CAUTION! A faster car is behind you.**



Competitor attempting to overtake.

Respect the flag signals



SERIOUS DANGER
Reduce your speed.
Be prepared to stop.



The flag signals must be strictly observed!



**Any violation may entail a sanction up to
DISQUALIFICATION!**



AFTER THE RACE

STAY SAFE!

STAY FOCUSED!

DRIVE SAFELY!





CONVOY

STAY SAFE!

- WEAR YOUR SAFETY BELTS
- WEAR YOUR HELMET*
**RECOMMENDED FOR TOURING CAR DRIVERS*
- NO PASSENGERS ALLOWED





mandatory

recommended



mandatory

mandatory





CONVOY

STAY FOCUSED!

- THE CONVOY IS SUPERVISED BY THE ORGANISATION CAR
- OBEY THE ORDERS OF THE TRACK MARSHALS
- BE ALERT (SPECTATORS ON TRACK)





CONVOY

DRIVE SAFELY!

- **NO AGGRESSIVE DRIVING!**
- **NO OVERTAKING!**
- **NO ACCELERATING!**



QUESTIONS

?

Lucine
INTERNATIONAL HILL CLIMB RACE **20**
Anniversary

Thank you!



FEDERATION
INTERNATIONALE
DE L'AUTOMOBILE

WWW.FIA.COM